



Public Consultation

Proposed Cambridge Gardens Electric Vehicle Charging Points and Associated Electric Vehicle Only Bays

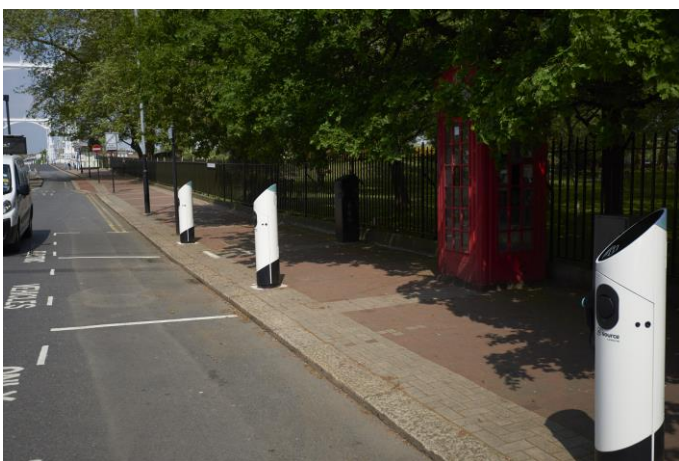
This document outlines our proposals for the introduction of Electric Vehicle Charging Points and associated Electric Vehicle Only Bays. Please read through the information in this document and then complete and return the enclosed questionnaire - **postage is free**. Alternatively, this document is also available for completion online at www.brent.gov.uk/consultation. Responses from within the consultation area only will be considered. The closing date for the return of the questionnaire is: **17 May 2019**.

Background

Brent Council is looking to expand its electric vehicle charging network to further support the adoption of low emission electric vehicles, and reduce air pollution across the borough. This is in line with the priorities set in the Mayor of London's Transport Strategy (as well as Brent's Air Quality Action Plan and Parking Strategy), to ensure that London meets its legal pollution limits as soon as possible.

The council is currently rolling out its first phase of 26 on-street public charge points across 18 locations with its delivery partner, Source London (<https://www.sourcelondon.net/>). Electric Vehicle (EV) registrations for Brent in 2017 were 201% higher than 2016 (SMMT), and this growth is forecast to continue through 2018. To service this overwhelming growth and encourage additional uptake in EVs, the Council is now working with Source London to identify and deliver a second phase of charge point sites.

Identifying potential new sites is a collaborative process involving various Council departments using a robust set of criteria. These criteria take into consideration existing EV registrations, resident requests, EV growth forecasts, a mix of town centre / high street locations, residential locations and their interconnectivity with public transport. Various technical aspects are also taken into consideration to ensure the safety of users. For this reason, it is not always possible to install charge points in certain locations.



What is being proposed?

We are proposing to introduce two charge points and associated parking bays in Cambridge Gardens, where only EVs will be able to park provided they are charging.

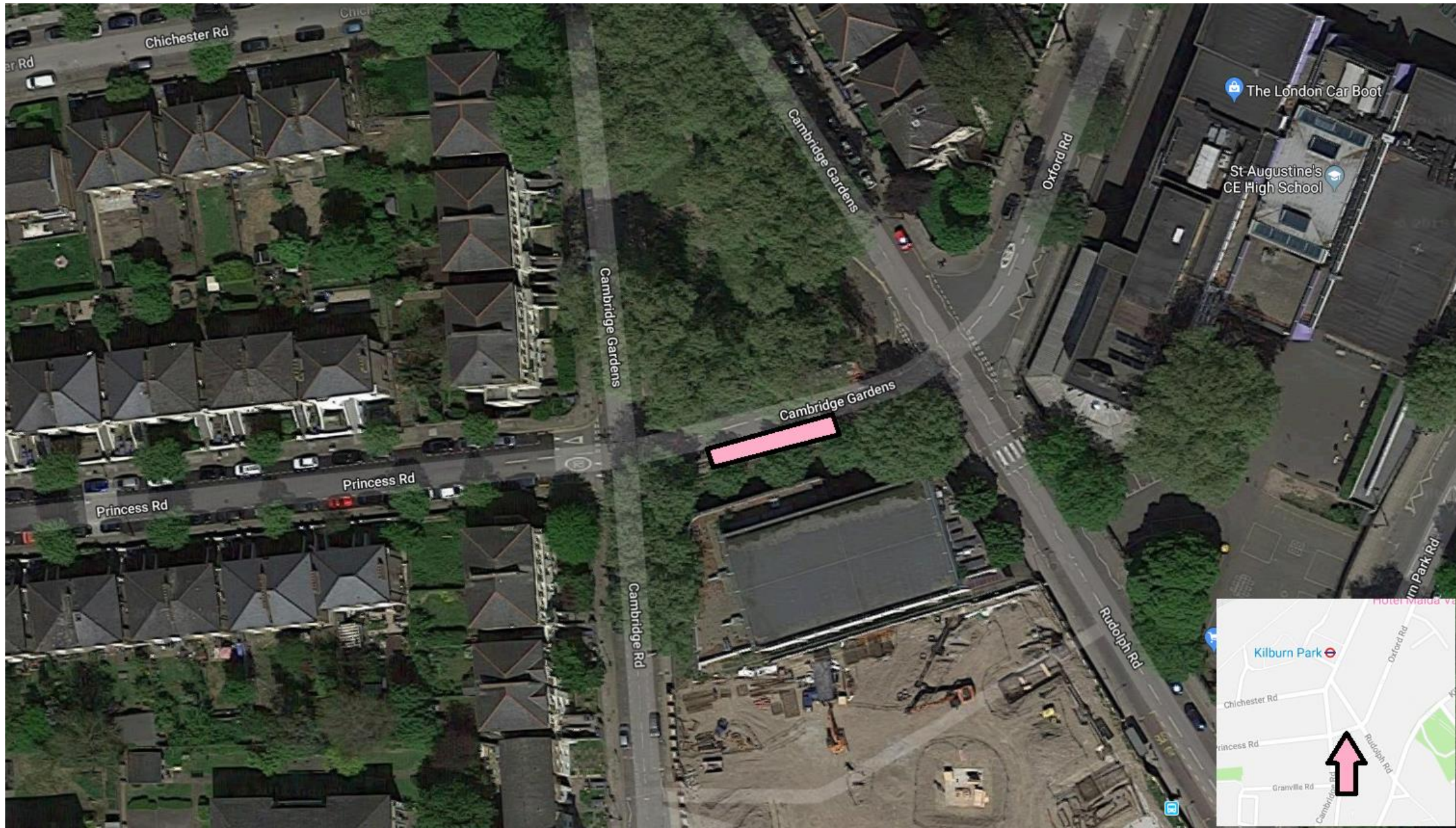
Please see inset an example of what electric vehicle charge points and associated bays look like once installed. Coloured LEDs at the top of the charge point improve visibility for visually impaired residents and indicate the charge point status. The aerial plan overleaf shows the proposed location of the charge point site on Cambridge Gardens.

What will happen next?

At this stage of the process, we are seeking your initial views. To give us your feedback, please complete and return the attached questionnaire using the freepost facility (or online using the link at the top of this page) by **17 May 2019**.

Sandor Fazekas, Project Development Manager, Highways and Infrastructure

Proposed Electric Vehicle Charging Point and Electric Vehicle Only Bay on Cambridge Gardens



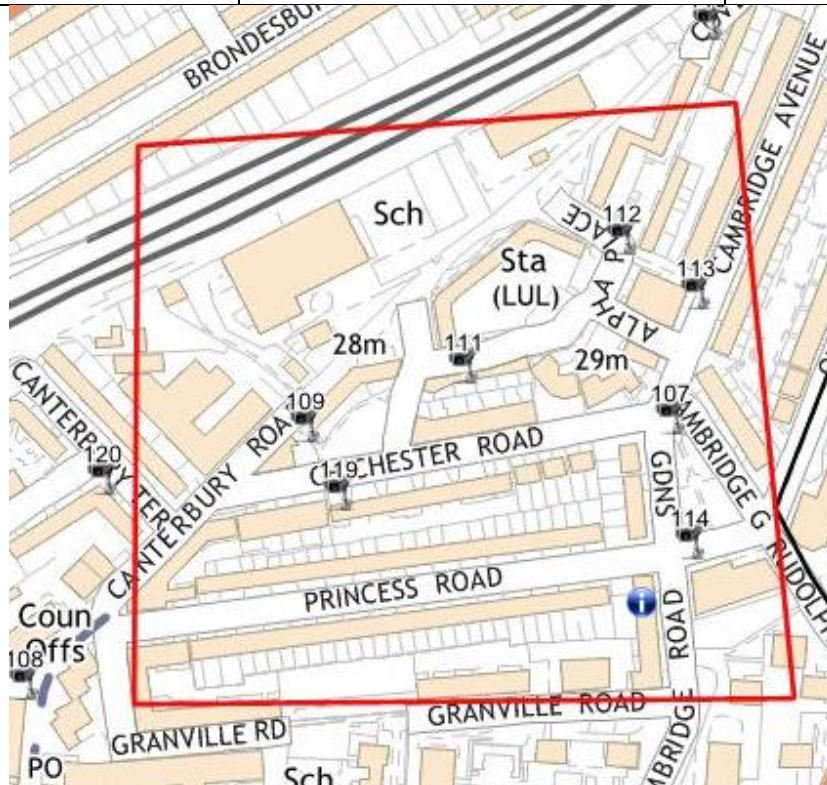
**We are consulting residents/businesses in the area within the marked red line
Your views are important to us**

Only the questionnaire issued by the Council should be used to respond to this consultation and no photocopies will be considered. Alternatively this document is also available for completion online at www.brent.gov.uk/consultation, responses from within the consultation area only will be considered.

Please complete the enclosed questionnaire and return it in the Freepost envelope provided to:

London Borough of Brent
Highways & Infrastructure
5th Floor, Civic Centre
Engineers Way
Wembley, Middlesex
HA9 0FJ

All properties within the consultation area are shown on the above plan. Local groups, Statutory Authorities, the Emergency Services and Ward Councillors are also being consulted.



Your response is protected as required by the Data Protection Act and will not be identified.

If you would like further information, then please contact:

Debbie Huckle,
Team Leader
Safety & Travel Planning
Highways & Infrastructure Service
London Borough of Brent
Tel: 020 8937 5600

Paulette Weekes
Consultation Officer
Project Development
Highways & Infrastructure Service
London Borough of Brent
Tel: 020 8937 5600